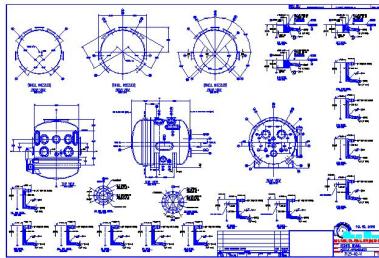


Since 1971 Melco Steel, Inc. has been a leader in the engineering, design and fabrication of ASME pressure vessels, *Harris Quick Opening Doors* and autoclave systems. The breech lock *Harris Quick Opening Door* is custom designed and fabricated for use on Melco's own autoclaves and pressure vessels and for use by other pressure vessel manufacturers as well. Custom designs for unique orientations, opening mechanisms and configurations are available.

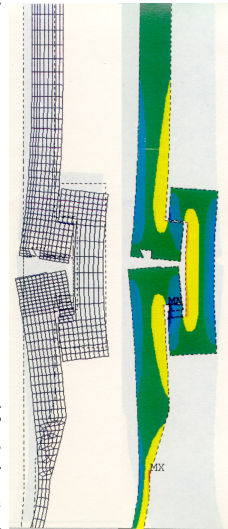
Melco Steel, Inc. is proud of its ability to design and fabricate equipment that conforms to the exact requirements of our clients. Each system is unique, with special attention paid in the preliminary design stages to assure complete satisfaction of operation and maintainability. While each system is custom built, we draw upon many years of experience and have been able to refine our standard design concepts to consistently provide reliable and precision equipment.



Engineering and design services include the ability to design, engineer and fabricate equipment to provide a unique process for your products. All in house engineering is done by experienced engineers and under the direct supervision of a registered professional engineer. Within the scope of autoclave equipment we have the ability to control pressure, vacuum and temperature with a wide range of media types, including: air, nitrogen, carbon dioxide, steam and water.

Advanced design analysis is available and is often used for severe or unusual conditions. Finite Element Analysis modeling is used to assure a complete and thorough review of stresses and cyclic fatigue analysis particularly in large diameter, high pressure quick opening doors. Modeling is not limited to Melco products, but can be applied to existing equipment from other manufacturers to

more accurately determine working stresses and fatigue limits.



Field inspection of existing autoclave equipment, whether made by Melco Steel or another manufacturer, is a service we provide. Field engineering inspection of safety equipment and devices, condition of pressure vessels and quick opening doors and associated process components are available. Written engineering analysis reports are provided with findings and recommendations where applicable.

Non-destructive field testing of pressure vessels, autoclave vessels and quick opening doors is available. We will inspect your equipment for signs of cracking, fatigue, wear and corrosion using the latest ultrasonic, magnetic particle and radiographic inspection techniques within the strict rules of ASME Section V. Our combined experience with the ASME code and autoclaves gives us a unique perspective with which to inspect and analyze your equipment.

- Complete System Design and Analysis
- ASME Repairs, Alterations and Re-Rates
- ASME Code Section VIII, Division 1
- Field Safety Inspection and Evaluation
- Ultrasonic, Magnetic Particle and Radiographic Inspection
- Providing Services and Equipment Since 1971
- Contact us for a *QUICK QUOTE*



MELCO STEEL, Inc.