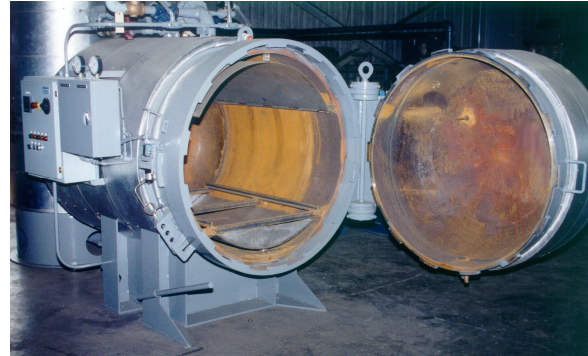


DEWAXING AUTOCLAVES

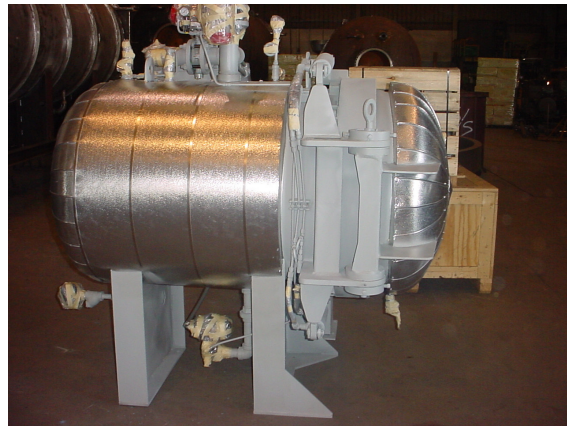


Since 1971 Melco Steel, Inc. has been a leader in the engineering, design and fabrication of autoclave systems. Melco Steel autoclaves, pressure vessels and other related products are designed and manufactured in strict accordance with the ASME Boiler and Pressure Vessel Code, Section VIII, Division 1. The breech lock *Harris* Quick Opening Door is custom designed and fabricated for use on Melco's own autoclaves and pressure vessels and for use by other pressure vessel manufacturers.

Melco Steel, Inc. is proud of its ability to design and fabricate complete dewaxing systems that conform to the exact requirements of the end user. Each system is unique, with special attention paid in the preliminary design stages to assure complete satisfaction of operation and maintainability. While each system is custom built, we draw upon many years of experience and have been able to refine our standard design concepts to consistently provide a reliable and precision piece of equipment.



Steam injected autoclaves are common in the industry and quite simple in operation. We can provide you with a simple manual operated autoclave to a completely automated, self contained autoclave.



- Complete System Design and Installation
- Direct Steam Injection
- Dry Accumulators Available
- Wet Accumulators Available
- Many Standard Designs Available
- Custom Designs to Suit Your Needs
- Automated or Economical Manual Controls
- Made in USA Since 1971



MELCO STEEL, Inc.

MELCO STEEL, INC. A1100 W. Foothill Blvd., Azusa, CA. 91702 A 626-334-7875 A Fax 626-334-6799

visit our website: www.melcosteel.com